



# AC EV CHARGING SOLUTION

GREEN TECHNOLOGY ZERO-CARBON LIFE



Workplace



Parking



Home



APP



OCPP1.6J



Service Life 8 Years

# FEATURES

## 7kW/11kW/22kW

AC Chargers With Power Output  
From 7kW/11kW/22kW

## OCPP1.6

Protocol (OCPP) 1.6  
User-Friendly With RFID

## Multiple Installation

Wall or Floor-Mounted  
Versions Available



240VAC 50-60Hz Single-Phase  
380-415VAC 50-60Hz Three-Phase



Ethernet, 4G And Wi-Fi  
Network Connections



CE, IEC 61851-1, IEC 61851-22-1  
IEC 62196-2 Type 2 Socket



**HiCI AC Charger**  
**The Best Choice for Your Business**

## Charging Network



Commercial  
Building



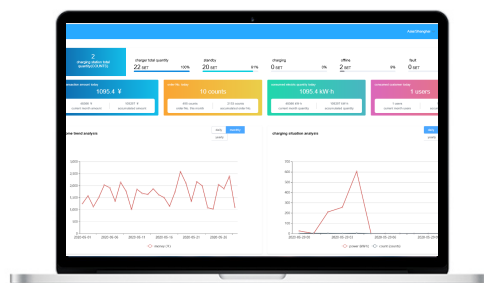
Parking



Residential  
Area



## Backend Office



EV Charging Network  
Management System

## Applications



Intelligent Charging  
Management



Transaction Record



Real-Time Monitor



Error Record



## HiCI Charger is Dedicate to Innovating AC Chargers for residential, commercial and public applications.

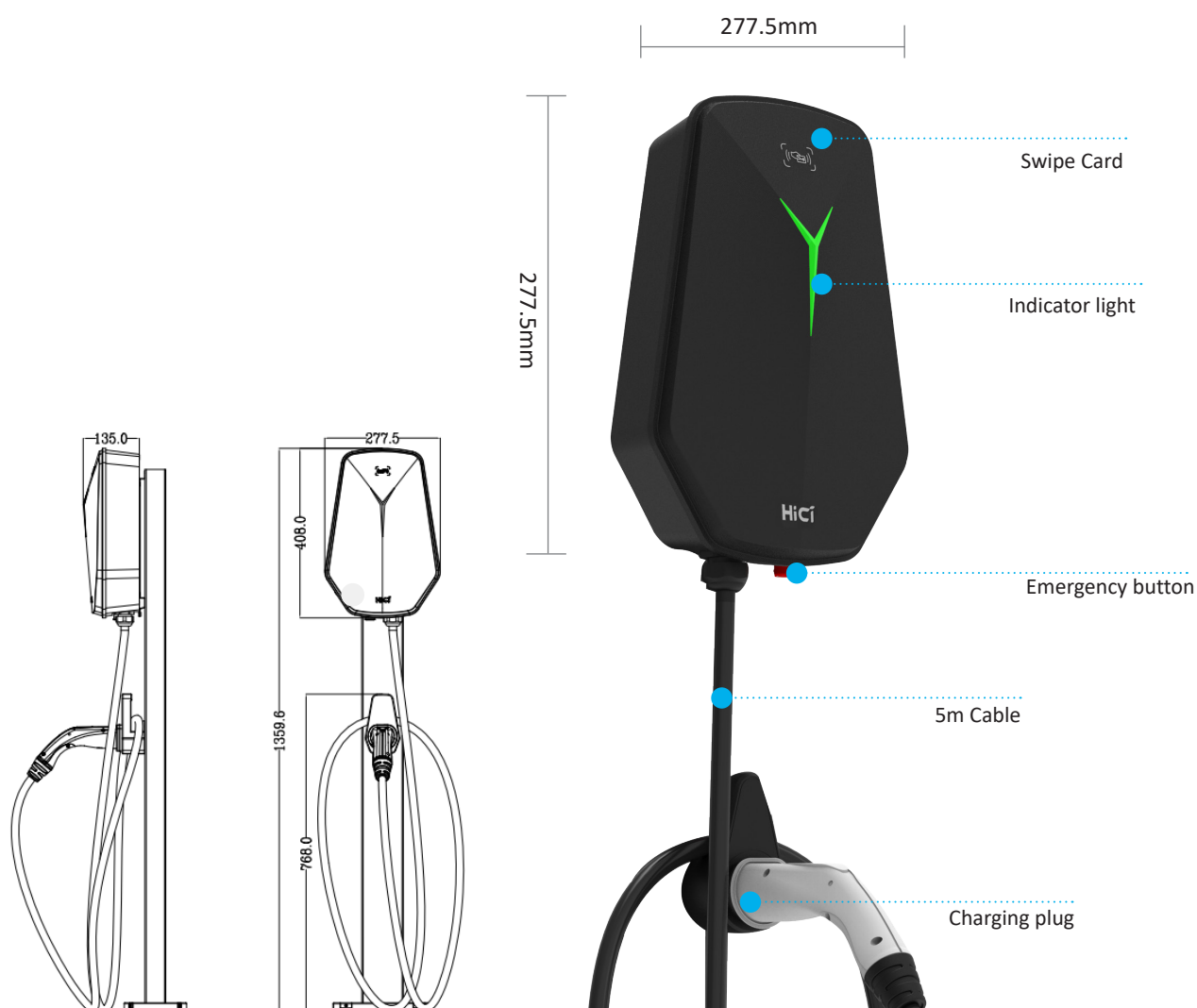
HiCI Charger are Durable and Reliable AC Electric Vehicle Charger.  
It is Designed for Easy Operation at Home or Commercial Use.



Application	HOME	COMMERCIAL	
		Standard	Advanced
Charging Mode	Plug & Charge Bluetooth	APP RFID Card	APP RFID Card
Input Rating	230Vac +/- 10%/1Phase 400Vac +/- 10%/3Phase		
Rated Frequency	50Hz		
AC Input Connection	L/N/PE    3P/N/PE		
Max.Input Current (A)	16A/32A		
Frequency (Hz)	45-65		
User Authentication	RFID	APP	APP
External	--	Wi-Fi / Ethernet / 4G	
Internal	--	OCPP 1.6JSON	OCPP 1.6JSON
Operating Temperature(°C)	-30~55		
IP Level	IP67		
Humidity (%)	5 ~ 95 RH non-condensing		
Cooling Method	Natural Cooling		
Cable Length (m)	5m		
Protection	Overvoltage Protection, Overload Protection, Earth Leakage Protection, Over-Temp Protection, Under Voltage Protection, Short Circuit Protection, Ground Protection, Surge Protection.		
Input & Output Protection	OCP:<35.2A / OVP:>275V /UVP:<160V		
Leakage Detection	RCD Type B 6mA		
Emergency	YES		
Safety	TUV/CE		
Charging Interface	IEC 62196-2:2016, Type 2 Plug		

**HiCi Charger Commercial Allow for Wi-Fi, Bluetooth, Ethernet and 4G Connection.**

**Built-In Independent Electric Meter, Make Charging Smart and Simple.**



## HiCi Digital Power Technology Co., Ltd.

**A:** No. 6, Fozuling 3rd Rd., East Lake Hi-tech Development Zone., Wuhan, China

**T:** +86 27 81650667 **E:** hzsn@hicitech.com **W:** en.hicitech.com

# GREEN TECHNOLOGY ZERO-CARBON LIFE



**HICI Digital Power Technology Co., Ltd.**

☎ +86 27 81650667

🌐 en.hicitech.com

✉ hzs@hicitech.com

📍 No. 6, Fozuling 3rd Rd., East Lake Hi-tech Development Zone., Wuhan, China